

The City of Des Moines' Public Works Department is pleased to provide your solid waste collection services. We understand the importance of this service to your family and our community's health and appearance. Please take a few minutes to familiarize yourself with some suggestions to make this service easier for your use.

GARBAGE PICKUP

Time of collection: Please place City of Des Moines cart at your designated collection point no later than 6:30 a.m. on the scheduled collection day and no earlier than 5:00 p. m. on the day before your scheduled collection. Please remove the cart from your designated collection point after pickup.



Solid waste is not collected on the following **holidays:** New Years, Memorial Day, 4th of July, Labor Day, Thanksgiving Day, and Christmas Day. For these holidays, refuse will be collected on the following day.

Collection Location: Here are a few pointers for using the carts:

- Place the cart within 18 inches of the curb.
- Place the cart so that the short metal bar faces the street and the handles face your home.
- Put your wastes in disposable plastic bags or boxes inside the cart and close the lid. This prevents the scattering of debris by wind and animals.
- Avoid placing the cart under low hanging tree branches.
- Place the cart at least 6 feet away from permanent structures (mailboxes, walls, utility poles, lampposts, etc.).
- Keep the carts away from parked vehicles.
- Consider using the flared section of your driveway approach if obstacles prevent placement elsewhere along your parking.
- Place the cart on a level surface.
- Place the cart at least 4 feet away from extra trash items, recycle bin, yard waste bags and yard waste bundles.

ITEMS OUTSIDE THE CART

For other items you want picked up, please follow these guidelines.

- One \$1.00 **“extra trash”** sticker has to be attached to each bag or box placed outside the cart. The **“extra trash”** sticker is for a 33 gallon bag, or box no larger than 24x24x36 inches. It cannot weigh more than 40 lbs.
- Large bulk items will only be picked up if they have a **“large item”** sticker attached. Large items that do not fit in a 33-gallon bag or box must have a \$5.00 **“large item”** sticker attached to each item.



Examples of large items are: furniture, mattresses, couches, tables, carpet (rolled and tied, in 4 foot lengths, and 18 inch diameter), etc.

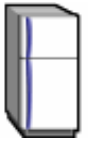
- Stickers can be purchased at Hy-Vee and Dahls stores or at City Hall

EXCHANGING/REPLACING CARTS

- The size of cart you received is shown on the lid. The City offers two size containers, 96 gallon and 64 gallon.
- If you wish to exchange the cart you received, call our 24-hour Customer Service Center. There is one courtesy exchange free of charge. The fee for all subsequent changes is \$25.00 for each cart change.
- **The property owner is responsible for lost or stolen carts at the current replacement fee.**
- **If you should move out of your current residence, please leave the cart behind. The cart belongs to the City of Des Moines.**
- Additional containers are available on request. Your monthly Solid Waste fee will be increased for each additional container.

APPLIANCE PICKUP

Residents may schedule collection of their appliances by calling the Public Works Department's 24 hour Customer Service Center at – 283-4950. The fee for appliance pickup is \$35.00 per appliance to cover the cost of collection, de-manufacturing and disposal. Residents must attach 7 of the \$5.00 **“large item”** stickers per appliance. Stickers may be purchased from Des Moines Dahl's and HyVee stores or at the City Treasurer's Office in City Hall. Appliances requiring stickers include: air conditioners, clothes dryers, clothes washers, dehumidifiers, dishwashers, freezers, furnaces, kitchen ranges, microwave ovens, ovens/stoves, refrigerators, and water heaters.



Residents may take appliances directly to the Metro Park East Landfill at 12181 NE 12th Ave, (Hwy 163) Mitchellville, 967-2076 and only pay a demanufacturing and disposal charge of \$10.00 each.

ITEMS NOT COLLECTED

For information on the following items, call Metro Waste Authority (MWA) at the numbers listed below, visit www.mwatoday.com, or look in MWA's Recycling & Garbage Guide – the gold section – in the front of your QwestDex® directory.

- **Tires** – MWA's Metro Park East Landfill (967-2076)
- **Hazardous waste** (including batteries, garden chemicals, oil-based paint, and propane tanks) – MWA's Regional Collection Center (967-5512)
- **Other items** such as railroad ties, pianos, landscape timbers and garage doors can be disposed of at MWA's Metro Park East Landfill (967-2076)
- **Syringes and Lancets** – MWA (244-0021) for information on safe disposal

Please call the above facilities or refer to the Recycling & Garbage Guide for more information on accepted items, directions, hours and rates.

RECYCLING (curb it!®)

YARD WASTE (Compost it!®)

Yard waste is picked up on your regular garbage collection day.

Yard waste consists of grass clippings, leaves, hedge trimmings, flower and garden plantings, brush, branches and twigs.

Yard waste may be placed in acceptable bags, boxes or bundles.

Acceptable bags are the paper “Compost it!” bags, which do not require a sticker, or you may use store-brand/generic paper yard waste bags which will require a “Compost it!” sticker for each bag.



You may use a cardboard box no larger than 2x2x3 feet. A “Compost it!” sticker must be attached to each box.

Yard waste will not be collected in plastic lawn and leaf bags. Do not place your yard waste in the garbage cart.

Bundled branches or brush requirements.

- Branches must be cut to 4-foot lengths or less and tied in bundles
- Bundles cannot exceed 1.5 feet in diameter
- Each bundle must have a “Compost it!” sticker attached for collection
- Limbs must be 2 ½ inches in diameter or less. Large limbs, stumps or logs will not be collected.

The weight limit for each bag, box or bundle must not exceed **40 pounds**.

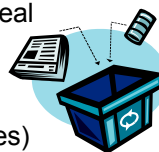
Recycle pickup is automatic, no appointment is necessary. The recycling is picked up on garbage day, **bi-weekly** (every other week as designated by the orange or yellow colored sticker on your green recycle bin).



You may request a new recycle bin by calling the Public Work's 24 Hour Customer Service Center.

Prepare recycle bin:

1. To avoid blowing debris, all newspapers should be placed in the bottom of the bin.
2. Mixed paper items (cereal boxes, clean food cartons, shoe type boxes, typing and computer paper, misc. mail, phone books and magazines) may be placed inside a paper grocery bag and placed inside the green bin.
3. Loosely place in the bin all #1 and #2 plastic jugs, clear glass containers and tin cans (discard caps and lids). Rinse out all containers. There is no need to remove labels.
4. Corrugated cardboard boxes may be flattened and placed under the green bin.



Please Keep Des Moines Clean

QUESTIONS?

If you have any questions regarding the Solid Waste Collection Program, please call:



Public Works 24 hour Customer Service
283-4950

Revised March, 2004

City of Des Moines Public Works Department

Solid Waste Collection Program



*Please let us know if we can
be of further service.*

**Public Works 24 hour
Customer Service**

<http://www.dmgov.org/>
283-4950